

- ❖ FASTER TO APPLY
- ❖ NO STAPLING
- ❖ MORE EFFICIENT
- ❖ EASIER TO USE
- ❖ NO SHRINKING
- ❖ NO PRE-PASTING

# TBM - MATRIX™

**TBM**™  
TECHNOLOGIES

## Applications

- ❖ Wall reinforced material (such as fiberglass wall mesh GRC wall panels, EPS insulation with the wall board, gypsum board and others).
- ❖ Reinforced cement products.
- ❖ Used for Granite, Mosaic, Marble back mesh and others.
- ❖ Replacement of Wire Mesh and other joint reinforcement.
- ❖ Reinforcement of Plaster Works - Interior & Exterior.
- ❖ Used for reinforcing damaged wall & cracked surfaces.



## Features & benefits

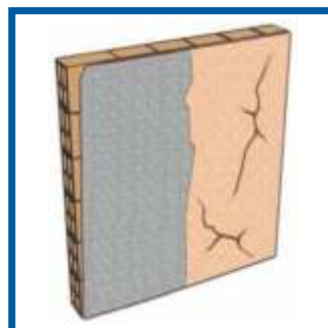
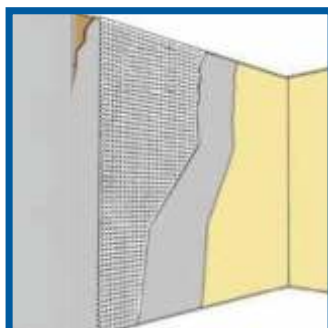
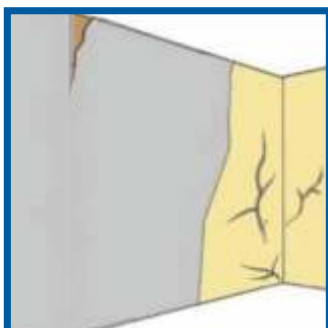
- ❖ Arrests reflective cracks and stops from expanding further.
- ❖ Requires no embedding coat, which also reduces drying time.
- ❖ Mold-resistant (unlike paper tape).
- ❖ High modulus, High tensile strength, High dimension stability, Stiffness, Highly resistant to Shrinkage Deformation.
- ❖ Chemical resistance.
- ❖ Thermal insulation of outer cladding.
- ❖ It can spread weight transfer and stress equally and it is easily adhered to back of material such as marble, mosaics and other stone.
- ❖ Simple application - Cutting & Positioning, Quick use, Easy to carry or handle.
- ❖ Alkali resistant.
- ❖ Thinner than Wire Mesh.
- ❖ Corrosion resistance - will not rust or corrode.
- ❖ Proprietary costing on mesh promotes even bonding with concrete for improved tensile strength.
- ❖ Long term durability.
- ❖ Easy to apply into mortar (even midway when mortar has started to dry).
- ❖ Almost 80% shrinkage reduction of visible crack

## TECHNICAL PARAMETERS

PROPERTIES	UNIT	TBM - MATRIX
Tensile Strength (MD x CMD)	kN/m	25 x 25
Tensile Elongation	% (+/-0.5)	3
Melting Point Coating	Celsius	>200°
Aperture size	MM	5 x 5, 10 x 10
Roll Size	Inches x Meter	4 x 50
		6 x 50
		8 X 50
		40 x 50
Material	Fiberglass Mesh Coated with Alkaline Resistant Polymer Modified Chemical.	

## COMPARISON

TBM - MATRIX	WIRE MESH
Arrests reflective cracks and Stops from expanding further.	After rusting the Wire Mesh does not perform technically.
TBM - Matrix is Light Weight and easy to carry.	Wire Mesh is Heavy Weight.
TBM - Matrix is rust and corrosion proof.	Wire Mesh is not rust and corrosion proof.
TBM - Matrix is Alkali Resistant.	Wire Mesh is Not Alkali Resistant.
TBM - Matrix is Moisture Resistant	Wire Mesh is not Moisture Resistant.
TBM - Matrix has zero wastage in corners and joints.	Wire Mesh has wastage in corners and joints.
TBM - Matrix has less thickness so consumption of plaster is less and gives better and smooth finished surface.	Wire Mesh has more thickness hence, more consumption of plaster is required.
TBM - Matrix provides insulation.	Wire Mesh does not provide insulation.
TBM - Matrix has high tensile strength compared to the weight ratio with Wire Mesh.	Wire Mesh has low Tensile Strength.
TBM - Matrix has smaller and even mesh size, so better holding of the plaster and thus better reinforcement.	Wire Mesh has larger mesh size which can reduce the strength of Plaster.
Easy Cutting & Easy Installation.	Difficult in Cutting & Installation.
Easy cutting with sharp knife or scissor so no harm or bleeding to applicator.	Some times it may harm the applicator with cut on hands.





**Disclaimer:**

Information in the brochure is to be treated as guideline for usage. Users may be advised to undertake a trial for the product suitability prior to its full scale usage. There is no express or implied guarantee/warranty for the results. The company is not liable for any consequential damages.

**Pictures used in this piece of communication are for representational purpose only.**



**MAP PRODUCTS PVT. LTD.**

101- Labh, Shukan Tower, above A.D.C. Bank, Judges Bunglow, Bodakdev, Ahmedabad - 380054  
Ph.: +91 75748 09625 | [info@tbmtechnologies.co.in](mailto:info@tbmtechnologies.co.in) | [www.tbmtechnologies.co.in](http://www.tbmtechnologies.co.in)

